



ENROLLMENT MANAGEMENT AND STUDENT SUCCESS (EMSSC)

Presented By:

Jane Sweetland
Dean of Enrollment Services

Overview

Charge: EMSSC will recommend to the president policies, procedures, practices and actions that will contribute to student success at CSUCI, including retention practices, student enrollment projections, facilitating graduation and other student success issues. Based on the Academic Master Plan, the committee will develop a 5-year strategic enrollment management plan.

EMSSC is a broadly representative group that addresses questions related to enrollment as it impacts the fulfillment of the institutional mission. Through shared governance, the University recommends to the president about such issues as:

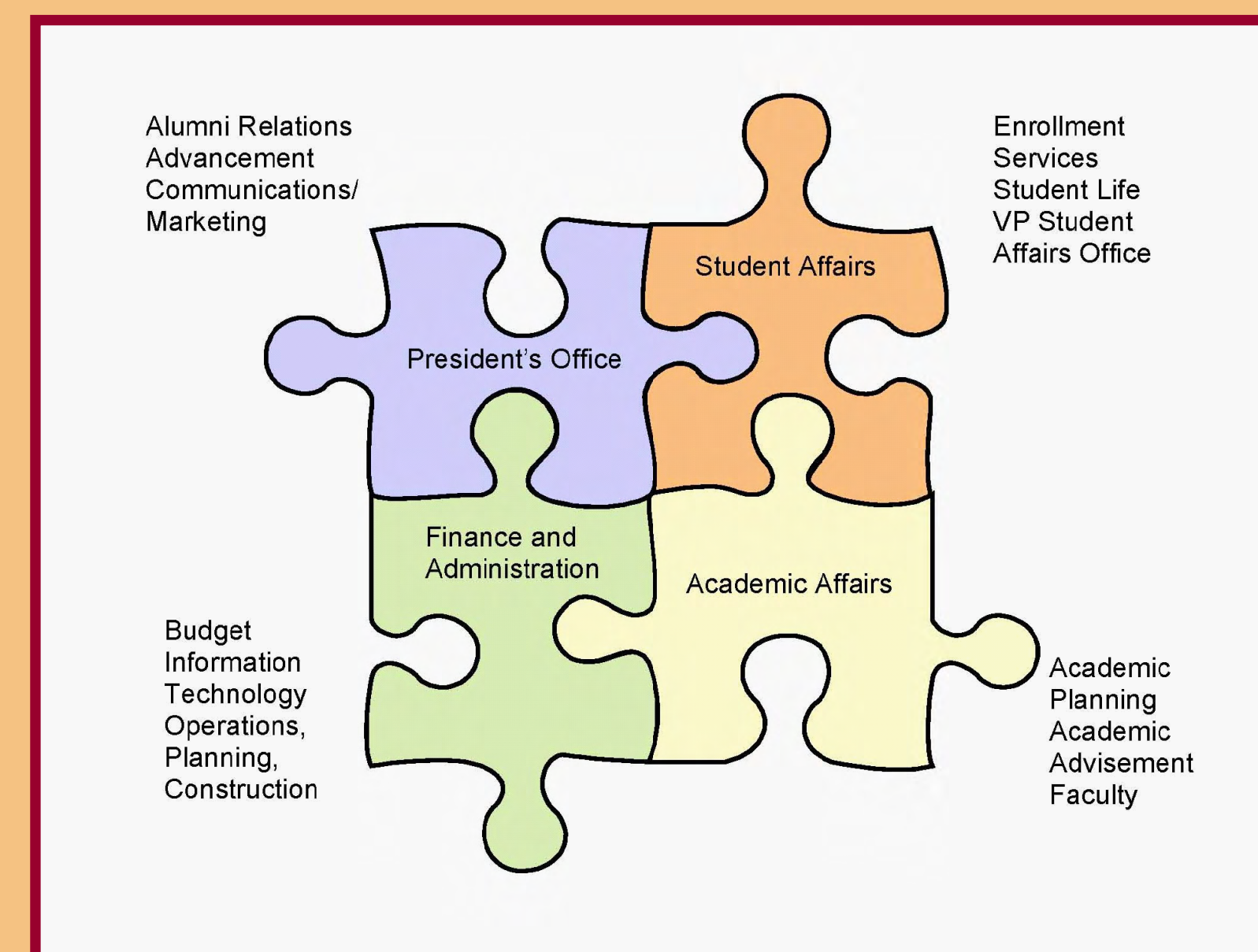
- Annualized Enrollment Target
- Enhanced Enrollment Target (over Chancellor's Office target)
- Cycle of student surveys
- Strategic Enrollment Management Plan
- Transfer Admission Guarantee for community colleges
- Transfer Pathways Program for local lower division transfers
- Development of infrastructure for international admission including limited admission to Extended Ed for 07 cycle
- Admission categories for 07 to include out-of-state students
- Mandatory advising for probationary students
- Closing to freshmen and/or transfer students
- Targets for specific cohort groups (credential, freshmen, etc.)

Enrolling for Success

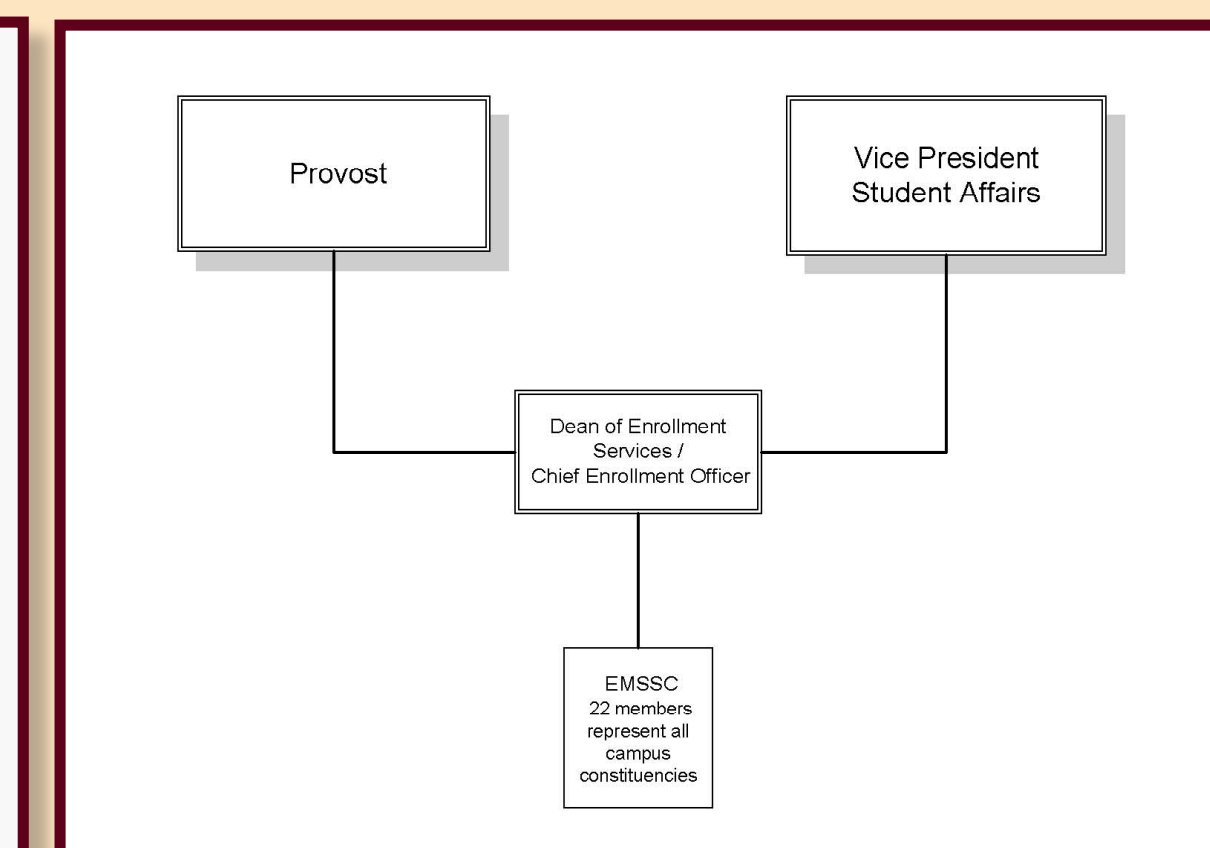
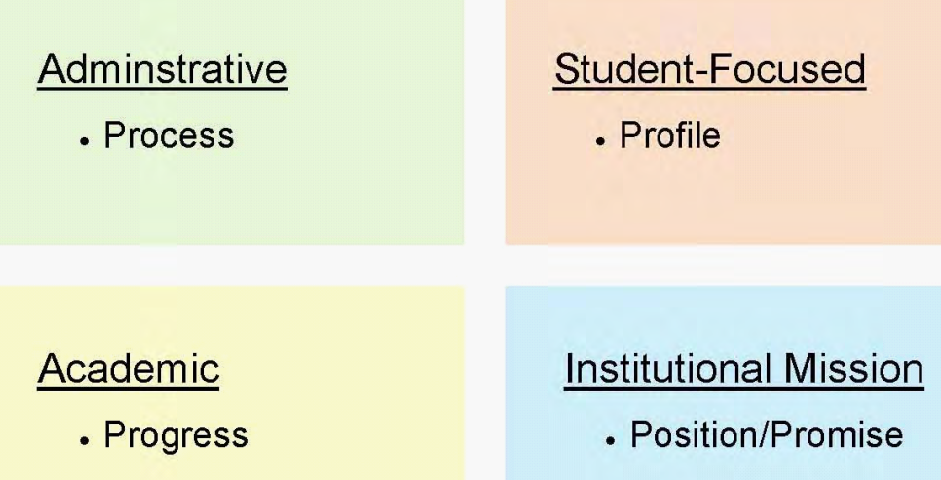
Focus initially on mission-critical, cost effective markets, and expand from there



Campus-Wide Participation

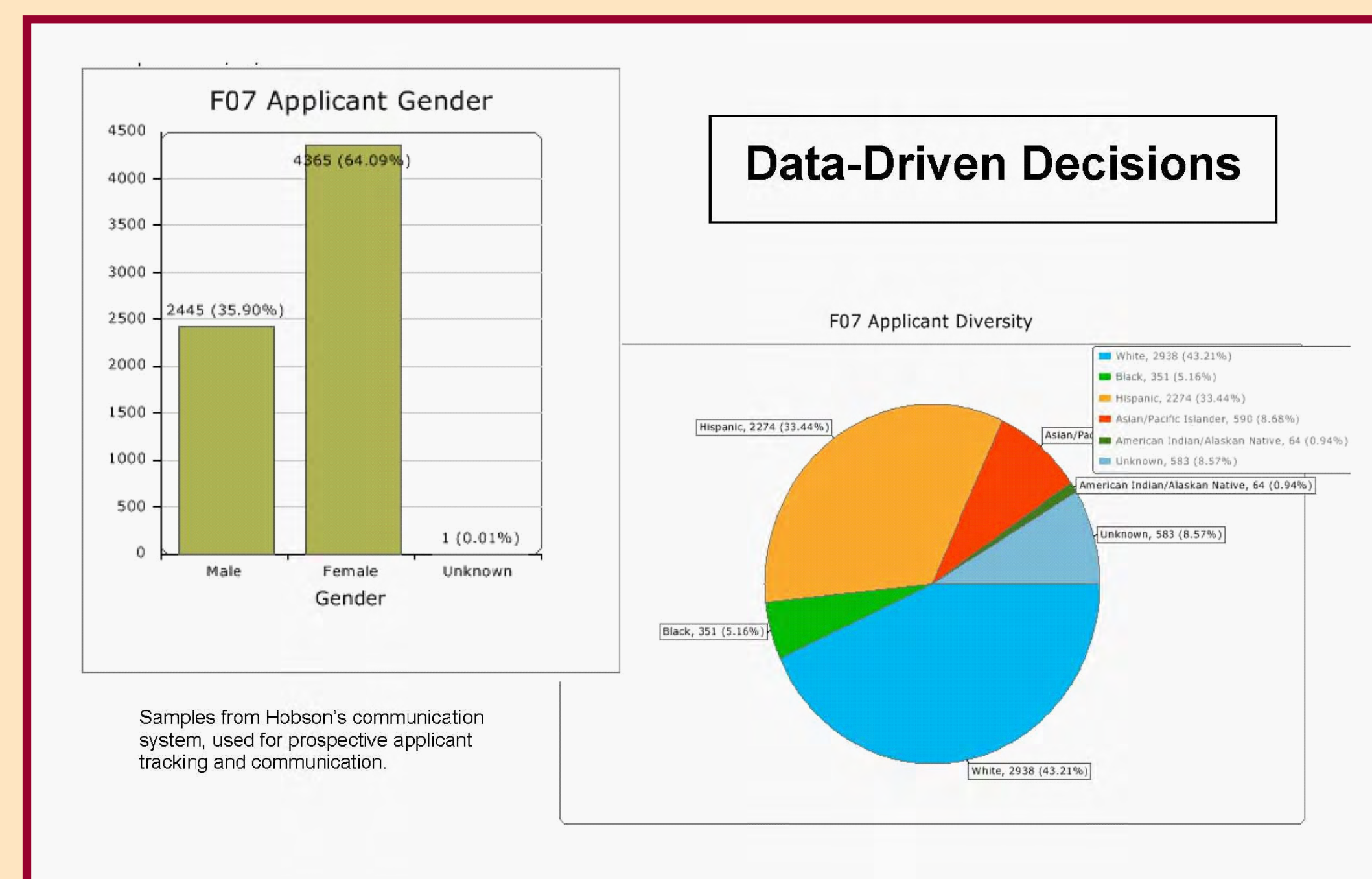


The 4 P's of Student Success



Data-Driven Decisions

To inform decision-making EMSSC regularly reviews campus data in conjunction with broader data available at the state and county levels.



STUDENT SUCCESS

EMSSC is engaging the campus in a discussion about how CSUCI defines "student success". A work in progress, this discussion places the student at the center of his educational experience.